

The reviews are in—you can expect  
life-changing moments ahead

# Washington D.C. Trip Meeting



# In This Meeting...



01

**Our Trip** and all that we're going to see and do

02

**What's Included** in our travel program

03

**Our Travel Partner**  
WorldStrides and why we are so excited to work with them

04

**How to Sign Up** for this incredible opportunity

# A Trip You'll Remember for Years to Come







Arlington National Cemetery



Tomb of the Unknown Soldier



Marine Corps Memorial





United States Capitol. Supreme Court. Library of Congress.



A photograph of the Jefferson Memorial in Washington, D.C. The white neoclassical building with its prominent columns is situated on a grassy bank. In the foreground, a calm body of water reflects the sky and the memorial. Pink cherry blossom trees are in bloom along the left side of the water.

Jefferson Memorial

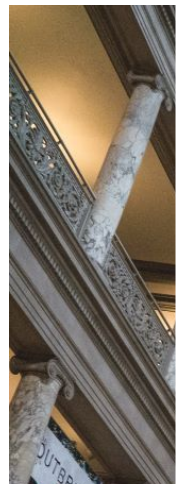
A photograph of the Martin Luther King Jr. Memorial in Washington, D.C. The image shows a large, curved, light-colored stone wall. Engraved on the wall in large, capital letters is the text "OUT OF THE MOUNTAIN OF DESPAIR, A STONE OF HOPE". Four young people are standing in the foreground, looking up at the wall. Their shadows are cast onto the wall to the left.

Martin Luther King Jr  
Memorial

A photograph of the Lincoln Memorial in Washington, D.C. at dusk. The large, white neoclassical building is brightly lit from within, with its many columns clearly visible. The sky is a deep blue with some clouds. People can be seen walking on the steps and plaza in front of the memorial.

Lincoln Memorial





World War II Memorial


Smithsonian Museums





A photograph of the White House, the official residence and workplace of the President of the United States. The building is a large, white, neoclassical structure with a prominent portico supported by columns. It is surrounded by green lawns and trees. A fountain is visible in the foreground. A teal label with the text "White House" is overlaid on the top left.

White House

A photograph of the Korean War Memorial. The central figure is a statue of a Korean War soldier, known as the "Unfinished Soldier," wearing a helmet and a poncho, holding a rifle. He is surrounded by a large, dark, reflective wall that shows the faces of many soldiers. The memorial is set in a landscaped area with greenery. A teal label with the text "Korean War Memorial" is overlaid on the bottom right.

Korean War Memorial

A photograph of the Vietnam Veterans Memorial. The image shows a long, narrow, reflective wall that mirrors the sky and the Washington Monument in the distance. The wall is covered in the names of the fallen soldiers. The ground is paved with cobblestones. A teal label with the text "Vietnam Veterans Memorial" is overlaid on the bottom center.

Vietnam Veterans Memorial

A photograph of the Washington Monument, a tall, white, obelisk-shaped structure. It is surrounded by a large, rectangular reflecting pool that mirrors the monument and the sky. The area is landscaped with green lawns and trees. A teal label with the text "Washington Monument" is overlaid on the bottom right.

Washington Monument



# Our Trip Includes

- Hotel Accommodations
- Transportation to & from our destination, and throughout the trip
- Meals
- Attractions & Activities
- Course Leader
- Academic Credit
- Discovery Journals
- Safety and Support



# Our Trip Details

**Trip Dates:** August 11 – August 14, 2025

**Price:** Quad Student Price: \$ 1879  
Double Adult Price: \$ 2161

**Deposit:** \$49

**Our Registration Deadline is:** November 4, 2024

**Trip ID:** 220577

**Full Refund Protection Plan:** \$259

Provides a full refund of all monies paid to WorldStrides (minus the cost of the FRP program and any other non-refundable fees) should you have to cancel for any reason.

Sign up by November 4<sup>th</sup> to receive a \$100 discount in addition to receiving the \$100 discount for signing up by the early registration deadline! That is a total savings of \$200!



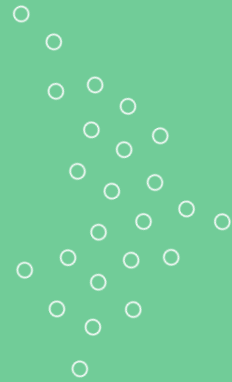


# FLAG Financial Assistance



- More than \$2.5 million in financial assistance given out each year
- Families with an annual adjusted gross income of \$85,000 or less may qualify
- Learn how much may be available to you by calling 800-468-5899

# The Gift of Education





Gift of Education ▾ Fundraising Ideas Scholarships and Financial Assistance ▾

## WorldStrides Fundraising Can Get You There



WorldStrides is committed to giving every student the opportunity to experience the life-changing things that happen on our programs every day. That's why we have a whole website dedicated to funds and fundraising. Let's do this – together!



**Send an E-Card**  
Our most successful fundraising tool! Raise money from friends, family, and community.



**Share on Facebook**  
Want to spread the word and raise funds using Facebook? We've got you covered.



**Set-Up a Fundraiser**  
Rely on the experience of thousands of participants before you to help you set up a successful fundraiser.



- Students can send e-cards, share links on social media, or send letters to friends and family
- 100% of the money raised goes to offset the trip price



**Get started at**  
**[worldstridesfundraising.com](http://worldstridesfundraising.com)**





# Affordable Payment Plans



- Only a small deposit required to sign up
  - Remaining balance spread out into smaller monthly installments
  - Payments can be auto-deducted from your account
- 
- **Advanced Payment Plan also available!** Sign up by October 31  
**\$125/student or \$199/adult** a month until trip balance is paid in full!



# Selecting a Payment Plan When Signing Up

- Extended plans are also available by calling WorldStrides Customer Service.
- Automated Monthly Payment Plans are available.
- You will see the initial deposit and then your monthly payment amounts. You can call Customer Service to see how much money may be available to you through financial assistance and that amount will be deducted off your final payment.

**Payment Options**

WorldStrides offers multiple ways to pay for your trip. Please choose the payment plan option below that best meets your needs.

We also offer an **Advantage Payment Plan** or an **Extended Payment Option** which can lower my monthly payment amount. You can contact a Customer Service Representative to help you switch to this payment plan after completing your online registration.

☒ Pay Monthly ☐ Pay In Full

☒ EZPay: I would like monthly payments automatically deducted from my checking account, credit card, or debit card, saving me time and money.

☐ Manual Pay: I would like a monthly invoice sent. A \$6.00 processing fee will be added to each invoice.

**Automated Payment Deductions (EZPay)**

By using your Checking Account and EZPay you can lower your monthly payments and spread out your monthly installments over time.

☒ Checking Account ☐ Credit Card / Debit Card

Choose a deposit amount for each traveler (Minimum deposit of \$89.00 for each traveler due today)

Traveler 1 Payment Schedule

Initial Payment

**\$280 Monthly 14 Payments**

Review payment schedule for Traveler 1

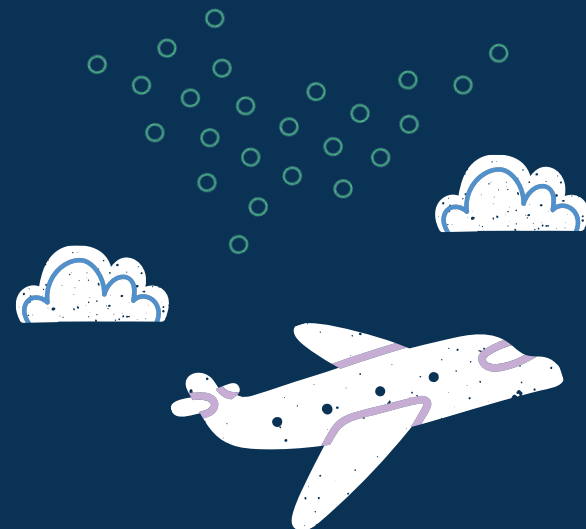
Your Initial Payment	\$89.00
14 standard monthly payments:	\$280.00
<b>FINAL payment due 03-20-2025</b>	<b>\$106.00</b>



# Thank You for Attending!

Sign up TONIGHT!

Our Trip ID is 220577



**Online:** [worldstrides.com/register](https://worldstrides.com/register)



**Phone:** 800-468-5899



**Questions?**

Email [twilson@erschool.com](mailto:twilson@erschool.com)

**We can't wait to see you all in  
Washington, D.C.!**